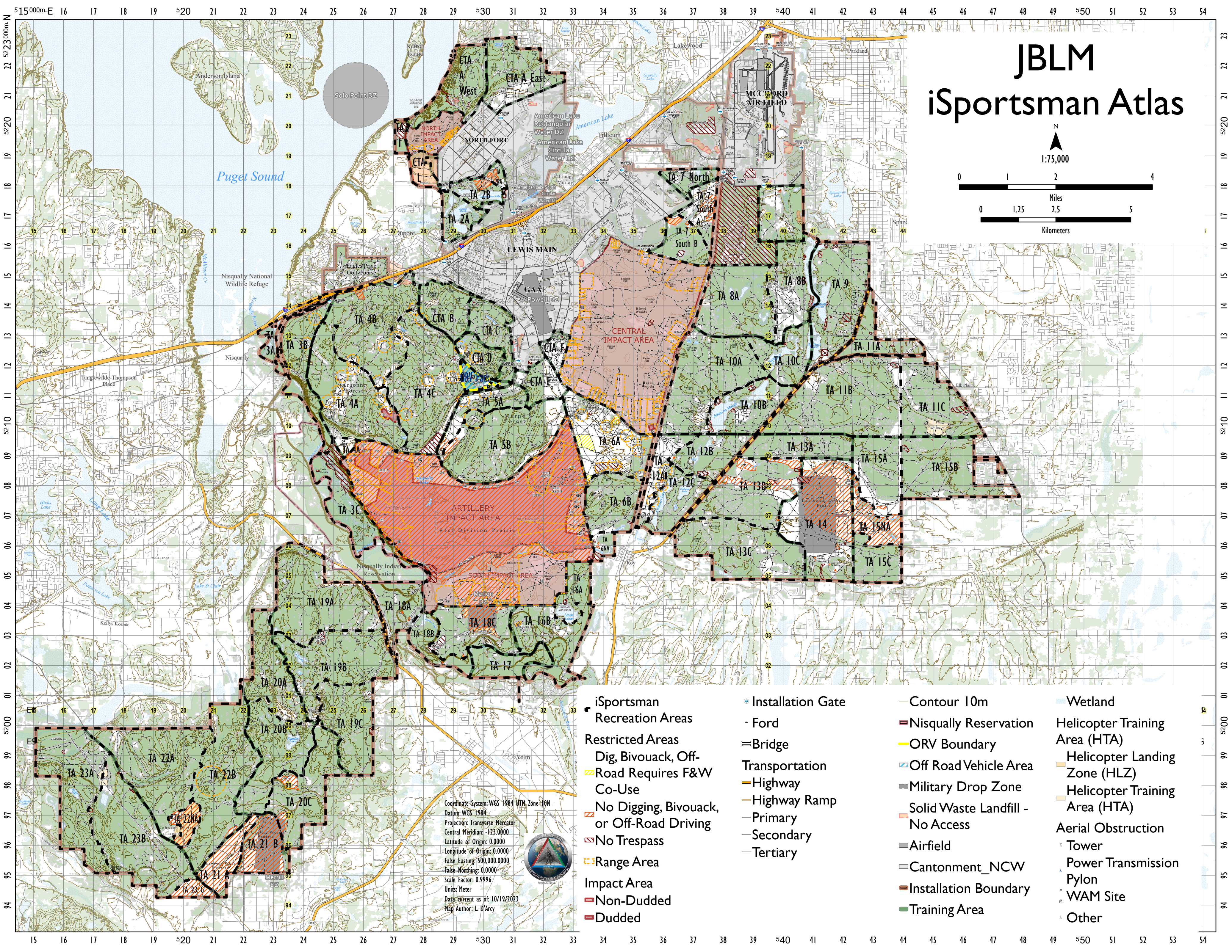
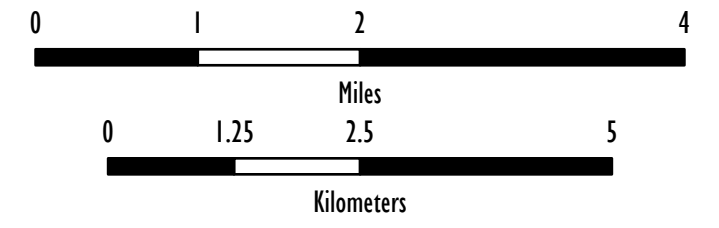


# JBLM iSportsman Atlas



1:75,000



Coordinate System: WGS 1984 UTM, Zone 18N  
 Datum: WGS 1984  
 Projection: Transverse Mercator  
 Central Meridian: -123.0000  
 Latitude of Origin: 0.0000  
 Longitude of Origin: 0.0000  
 False Easting: 500,000.0000  
 False Northing: 0.0000  
 Scale Factor: 0.9996  
 Units: Meter  
 Data current as of: 10/19/2023  
 Map Author: L. D'Arcy

- |  |   |   |   |
|--|---|---|---|
| <ul style="list-style-type: none"> <li> iSportsman Recreation Areas</li> <li><b>Restricted Areas</b></li> <li> Dig, Bivouack, Off-Road Requires F&amp;W Co-Use</li> <li> No Digging, Bivouack, or Off-Road Driving</li> <li> No Trespass</li> <li> Range Area</li> <li><b>Impact Area</b></li> <li> Non-Duded</li> <li> Duded</li> </ul> | <ul style="list-style-type: none"> <li> Installation Gate</li> <li> Ford</li> <li> Bridge</li> <li><b>Transportation</b></li> <li> Highway</li> <li> Highway Ramp</li> <li> Primary</li> <li> Secondary</li> <li> Tertiary</li> </ul> | <ul style="list-style-type: none"> <li> Contour 10m</li> <li> Nisqually Reservation</li> <li> ORV Boundary</li> <li> Off Road Vehicle Area</li> <li> Military Drop Zone</li> <li> Solid Waste Landfill - No Access</li> <li> Airfield</li> <li> Cantonment_NCW</li> <li> Installation Boundary</li> <li> Training Area</li> </ul> | <ul style="list-style-type: none"> <li> Wetland</li> <li> Helicopter Training Area (HTA)</li> <li> Helicopter Landing Zone (HLZ)</li> <li> Helicopter Training Area (HTA)</li> <li><b>Aerial Obstruction</b></li> <li> Tower</li> <li> Power Transmission Pylon</li> <li> WAM Site</li> <li> Other</li> </ul> |
|--|---|---|---|